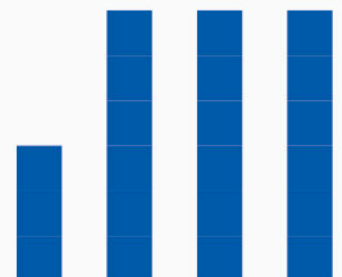
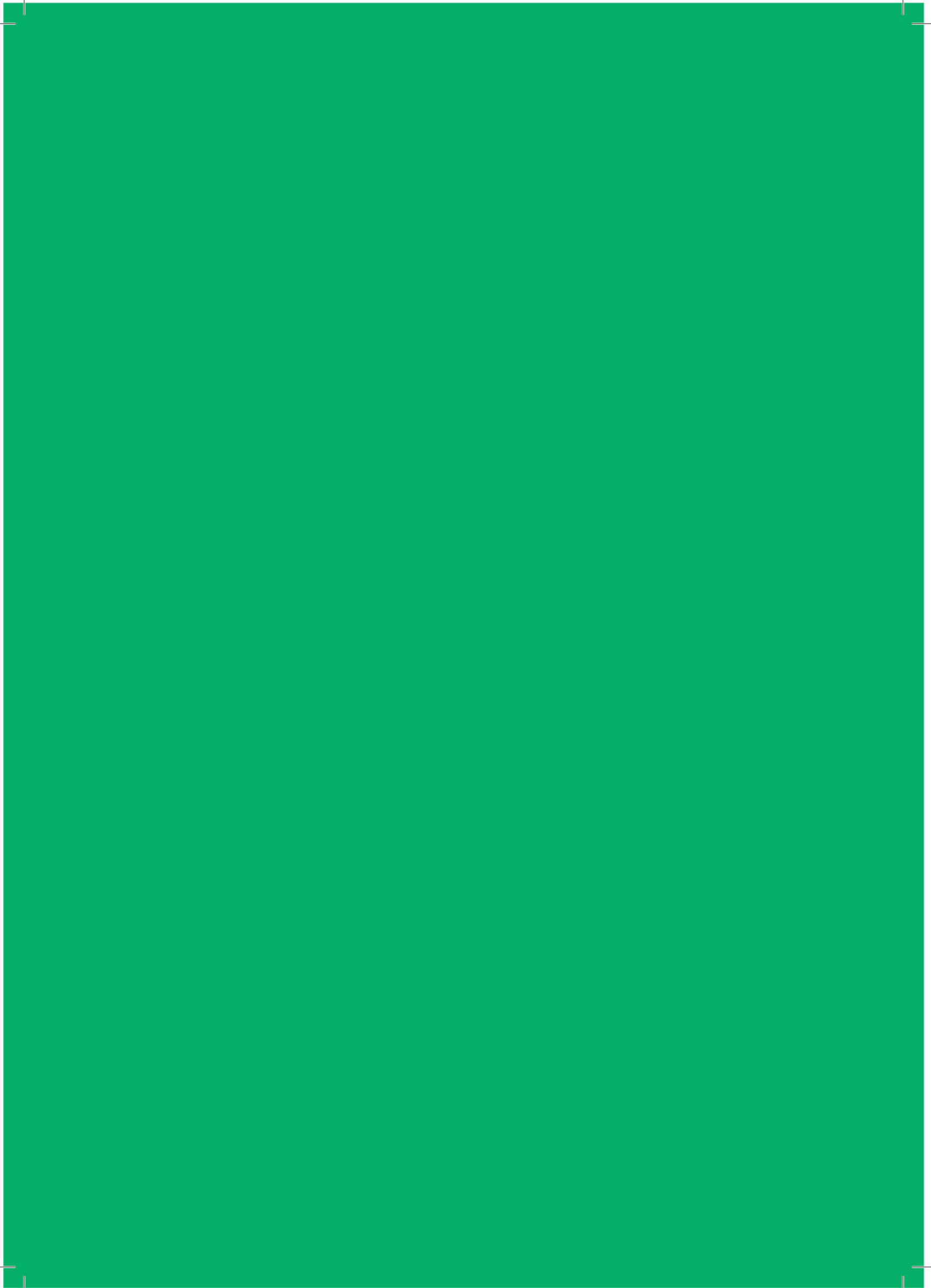




DIGITAL FARMING





V25D2910

DIGITAL FARMING





NOVA 100 RATE CONTROL COMPUTER

GENERAL FEATURES

Rate Controller

Sustaining required application rate (lt/ha) at all tractor speeds by using flowrate, pressure and speed sensors.

Large Display

20 x 4 character screen display for user friendly navigation

Job Registration

10 jobs can be saved and the same jobs can be recalled.

Automatic Spray Shut-off

Spray stop below minimum set pressure and speed.

Displayed Info

Application rate, Speed, Pressure, Flow rate, Sprayed quantity, Tank level, Area covered, Spraying duration, Distance covered.

Min-Max Pressure

Set Min-Max operating pressure, system will keep pressure at these intervals during spray job

Customized Nozzle Spacing

Set customized nozzle spacing parameters to correctly regulate spray job for different nozzle spacing needs

Efficient row-turn spraying

Prevents pressure loss in the system on restarting spray job at row turns

Infinite Job Summary

Keeps data of total area covered and total spray amount starting from fist operation

Data Transfer

SD card for data transfer (Export) / USB connection for software updates

STANDARD PACKAGE

TNOV100.01



Nova 100 Computer



2m Power Cable

TO BE ORDERED



KYP044

Cross 100
Compact GNSS



SIM015

Nova 100
4,5 + 1,5m
Valve Cable

OPTIONAL



SIM016

10,5 + 1,5m
Valve Cable



KYP029

Triple Suction
Cup Mount



KYP037

Screw Mount



SAL400504

Kit Blister 3
Hole Plug
Tractor Side



KYP030

Speed Sensor
with 2m Cable



KYP021

Level Sensor 0,4 BAR
with 2m Cable



KYP022

Pressure Sensor
25 BAR - G 1/4



K101T1

Hydra 500 Kit



K101T2

Hydra 700 Kit

REQUIRED PRODUCTS

20 BAR 5W WOLF FLOWMETER ELECTROVALVE KIT



TA 871T502



TA 863T024S



TA 32621M3



TA 4626415



TA 863T0150

FITTINGS & MANOMETER



TA 1091313



TA G11058V



TA 1190425



TA 010004



TA 911025

x5

x1

x1

REQUIRED PRODUCTS - OPTIONALS



TA 864050250

200 l / min Main Control Valve



TA 46211A4A5B5

ORION Flow Meter



TA 863T0120

2W Section Valve



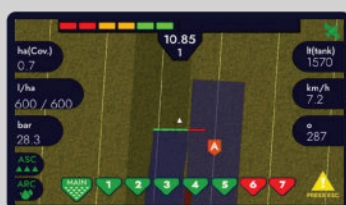
TA 1091316

Hose Connector 16 mm



NOVA 200 AUTO SECTION CONTROL COMPUTER

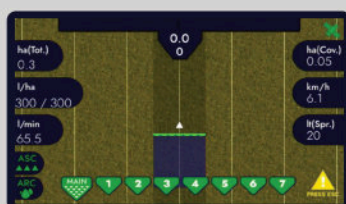
GENERAL FEATURES



Auto Section Control (ASC)



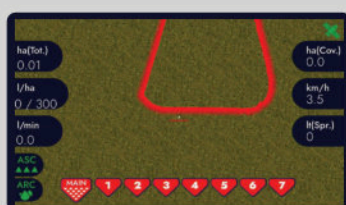
The Automatic Section Control feature automatically turns boom sections on and off based on the field map and GPS position. This prevents overlaps and skips, reduces chemical waste, and ensures precise, efficient spraying even in irregular field shapes.



Automatic Rate Control (ARC)



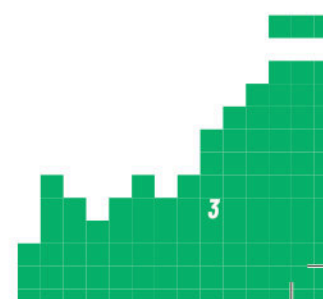
The Automatic Rate Control feature keeps the target application rate constant regardless of changes in speed or field conditions. Nova 200 continuously adjusts flow and pressure in real time, ensuring uniform chemical distribution and optimal spraying efficiency.

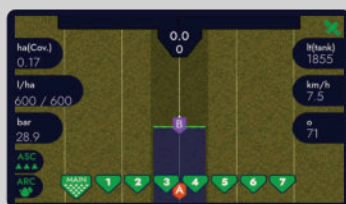


Field Boundary



The Field Boundary feature enables operators to record and define the exact perimeter of a field using GNSS. Nova 200 uses this data to optimize spraying operations – automatically stopping flow outside boundaries and ensuring precise, waste-free application within the defined area.





A-B Straight Line



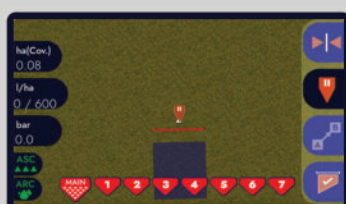
The A-B Straight Line mode allows operators to define a straight guidance path by marking two reference points (A and B). Nova 200 then generates perfectly parallel lines, ensuring precise and consistent navigation across the entire field.



Shift Line



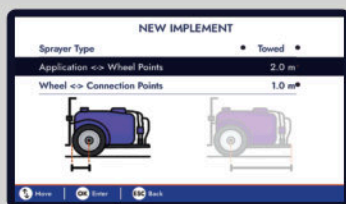
The Shift Line feature allows operators to easily move guidance lines left or right without redefining the A-B line. This provides flexibility during operation, making it simple to adjust for implement width changes, overlaps, or missed passes.



Pause Point



The Pause Point feature lets operators stop spraying and resume later from the exact GPS location where they left off. Nova 200 automatically records job data during pauses and restarts spraying with precise accuracy, preventing overlaps or missed areas. Ideal for refills, obstacles, or short breaks, it ensures efficient and consistent application across the field.



Equipment/Tractor Database

The Equipment & Tractor Database feature allows operators to add, configure, and save multiple sprayer and tractor profiles within Nova 200. Each profile stores key parameters such as boom width, number of sections, and calibration data, enabling quick setup, easy switching between machines, and consistent system performance in every operation.



Auto Save Feature

The Auto Save Feature of Nova 200 continuously records all spraying data in real time, eliminating the need for manual job completion or confirmation. Every action is automatically stored in the controller's memory as it happens, ensuring that no data is lost even if the operator exits the job screen, shuts down the system, or pauses the operation. This intelligent function provides complete traceability, reliability, and operational safety under all field conditions.



STANDARD PACKAGE

TNOV200.01



Nova 200 Computer



2m Power Cable

TO BE ORDERED



SIM100

Nova 200
4,5 + 1,5m
Valve Cable



KYP036

Cross 200
Smart GNSS

OPTIONAL



SIM101

10,5 + 1,5m
Valve Cable



KYP029

Triple Suction
Cup Mount



KYP030

Speed Sensor
with 2m Cable



SAL400504

Kit Blister 3
Hole Plug
Tractor Side



KYP033

Cross 300 RTK
Base Station



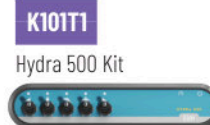
KYP021

Level Sensor 0,4 BAR
with 2m Cable



KYP022

Pressure Sensor
25 BAR - G 1/4



K101T1

Hydra 500 Kit



K101T2

Hydra 700 Kit

REQUIRED PRODUCTS

20 BAR 5W WOLF FLOWMETER ELECTROVALVE KIT



TA 871T502



TA 863T024S



TA 32621M3



TA 4626415



TA 863T0150

FITTINGS & MANOMETER



TA 1091313



TA G11058V



TA 1190425



TA 010004



TA 911025

x5

x1

x1

REQUIRED PRODUCTS - OPTIONALS



TA 864050250

200 l/min Main Control Valve



TA 46211A4A5B5

ORION Flow Meter



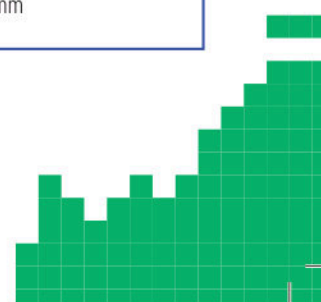
TA 863T0120

2W Section Valve



TA 1091316

Hose Connector 16 mm





NOVA 110 ORCHARD RATE CONTROL COMPUTER

GENERAL FEATURES

Rate Controller

Sustaining required application rate (lt/ha) at all tractor speeds by using flowrate, pressure and speed sensors.

Large Display

20 x 4 character screen display for user friendly navigation

Job Registration

10 jobs can be saved and the same jobs can be recalled.

Automatic Spray Shut-off

Spray stop below minimum set pressure and speed.

Displayed Info

Application rate, Speed, Pressure, Flow rate, Sprayed quantity, Tank level, Area covered, Spraying duration, Distance covered.

Min-Max Pressure

Set Min-Max operating pressure, system will keep pressure at these intervals during spray job

Customized Nozzle Spacing

Set customized nozzle spacing parameters to correctly regulate spray job for different nozzle spacing needs

Efficient row-turn spraying

Prevents pressure loss in the system on restarting spray job at row turns

Infinite Job Summary

Keeps data of total area covered and total spray amount starting from fist operation

Data Transfer

SD card for data transfer (Export) / USB connection for software updates

STANDARD PACKAGE

TNOV110.01



Nova 110 Computer



2m Power Cable

TO BE ORDERED



KYP044

Cross 100
Compact GNSS



SIM021

Nova 110
3+1.5 mt Valve
Cable

OPTIONAL



KYP029

Triple Suction
Cup Mount



KYP037

Screw Mount



SAL400504

Kit Blister 3
Hole Plug
Tractor Side



KYP030

Speed Sensor
with 2m Cable



KYP021

Level Sensor 0,4 BAR
with 2m Cable



KYP022

Pressure Sensor
60 BAR - G 1/4

REQUIRED PRODUCTS

40 BAR 2W ELECTRO VALVE ORION KIT



TA 881B14252D

FITTINGS & MANOMETER



TA 010004



TA 1190425



TA 911040

x1

40 BAR 2W ELECTRO VALVE WOLF KIT



TA 881B14252D

FITTINGS & MANOMETER



TA 010004



TA 1190425



TA 911040

x1



NOVA 130 SPREADER RATE CONTROL COMPUTER

GENERAL FEATURES

Rate Controller

Sustaining required application rate (kg/ha) at all tractor speeds by using flowrate, Linak electromotors.

Large Display

20 x 4 character screen display for user friendly navigation

Job Registration

10 jobs can be saved and the same jobs can be recalled.

Automatic Spreading Shut-off

Spreading stop below minimum set pressure and speed.

Displayed Info

Application rate, Speed, Flow rate, Spread quantity, Tank level, Area covered, Spreading duration, Distance covered.

Efficient row-turn spreading

Ensures efficient spreading after row turns.

Infinite Job Summary

Keeps data of total area covered and total spray amount starting from fist operation

Data Transfer

SD card for data transfer (Export) / USB connection for software updates

STANDARD PACKAGE

TNOV130.01



Nova 130 Computer



2m Power Cable

TO BE ORDERED



KYP044

Cross 100
Compact GNSS



SIM023

Nova 130
3 + 1,5m
Valve Cable

OPTIONAL



KYP029

Triple Suction
Cup Mount



KYP037

Screw Mount

REQUIRED PRODUCTS



TIMFDYP01

LINAK LA12 Actuator

x2 unit



AQUA 200 2 WAY CONTROL BOX

Easy section control prevents pressure deviation in section opening/closing and safe application is ensured without spraying hose in- cab

GENERAL FEATURES

Spraying Dosage

Control Box allows to increase or decrease the pressure manually, which adjusts spraying dosage during operation.

Control Box

It controls 2 section valves Open/Close, main valve Open/Close, pressure regulation

In-Cab Control

No chemical hoses carried inside the cabin, safe & easy spraying operation control.

STANDARD PACKAGE



SAL 910285

2W Control Box
with power cable

TO BE ORDERED



SIM005

4,5 m 2W Valve Cable

OPTIONAL



SAL 400504

Kit Blister 3 Hole Plug
Tractor Side

REQUIRED PRODUCTS

40 BAR 2W
ELECTRO VALVE KIT



TA 881214242

FITTINGS & MANOMETER



TA 1193425

Optional



TA 1091425

Optional



TA 1191425

x1



TA 010004

x1



TA 911040

x1



TA G11054

x1



K100T1

AQUA 500 5 WAY CONTROL BOX

Easy section control prevents pressure deviation in section opening/closing and safe application is ensured without spraying hose in- cab

GENERAL FEATURES

Spraying Dosage

Control Box allows to increase or decrease the pressure manually, which adjusts spraying dosage during operation.

Control Box

It controls 5 section valves Open/Close, main valve Open/Close, pressure regulation

In-Cab Control

No chemical hoses carried inside the cabin, safe & easy spraying operation control.

STANDARD PACKAGE



SAL 910523

5W Control Box
with power cable

TO BE ORDERED



SIM006

4,5m 5W Valve Cable



SAL 760402

Ram Mount Adapter

OPTIONAL



SAL 400504

Kit Blister 3 Hole Plug
Tractor Side



KYP029 KIT

Triple Suction
Cup Mount



KYP037 KIT

Screw Mount

REQUIRED PRODUCTS

20 BAR 5W ELECTRO VALVE KIT



TA 871T502



TA 863T024S



TA 32621M3



TA 863T0150

FITTINGS & MANOMETER



TA 1091313

x5



TA G11058V



TA 1190425

x1



TA 010004



TA 911025

x1



HYDRA 500 5 WAY CONTROL BOX

The hydraulic control box typically controls the flow and pressure of hydraulic fluid from the sprayer to the various hydraulic cylinders and motors, thereby adjusting the boom arm's level, direction, and angle

GENERAL FEATURES

Hydraulic Boom Movements

The hydraulic valves used in the system allow you to control the boom movements.

5 Way

Leveling, Height, Lock and 2 boom movement

STANDARD PACKAGE



SAL 911531
5W Control Box with power cable


TO BE ORDERED




SIM003
6m Valve Cable




TIMFAYP16
Solenoid Operated Directional 6 Spool Control Valves




SAL 400504
Kit Blister 3 Hole Plug Tractor Side



KYP029
Triple Suction Cup Mount



KYP037
Screw Mount



SIM002
11m Valve Cable



HYDRA 700 7 WAY CONTROL BOX

The hydraulic control box typically controls the flow and pressure of hydraulic fluid from the sprayer to the various hydraulic cylinders and motors, thereby adjusting the boom arm's level, direction, and angle

GENERAL FEATURES

Hydraulic Boom Movements

The hydraulic valves used in the system allow you to control the boom movements.

7 Way

Leveling, Height, Lock and 4 boom movement

STANDARD PACKAGE



SAL 911736

7W Control Box with power cable

TO BE ORDERED



SIM004

6m Valve Cable



SAL 760402

Ram Mount Adapter



TIMFAYP18

Solenoid Operated Directional 7 Spool Control Valves



SAL 400504

Kit Blister 3 Hole Plug Tractor Side



KYP029

Triple Suction Cup Mount



KYP037

Screw Mount



SIM013

11m Valve Cable

TIMAPP SMART FARM MANAGEMENT IN YOUR HANDS

Timapp is a digital platform designed for farmers and agricultural companies to monitor, manage, and optimize field operations. By connecting your field equipment and operators through the app, Timapp brings efficiency, traceability, and control to every stage of your agricultural workflow.



Settings

Customize your farm management system with ease. In the Settings section, you can:

Add New Operators



Lets administrators easily create user profiles and assign specific access levels, ensuring secure and organized teamwork.

- Improves Operational Control
- Traceability
- Increases Data Security

Upload Land



Allows users to quickly define and register new fields by importing or manually entering their GPS boundaries.

- Ensures high accuracy in defining field boundaries
- Simplifies integration with GPS-guided equipment
- Saves time by eliminating manual field mapping

Add Implement & Tractor



Allows users to register and link their machinery to the system for seamless operation management. By adding specific tractor and implement details, the app ensures accurate control, monitoring, and data recording during field work.

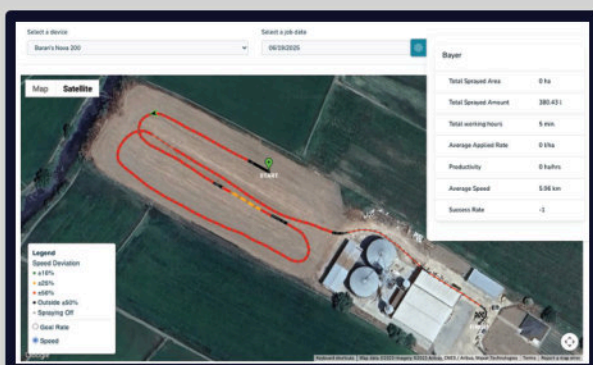
- Enables quick setup of new machines
- Improves compatibility between devices and implements
- Ensures accurate operation data tracking

Jobs

Easily create and assign field tasks to operators through the Jobs section. Each job includes essential details such as target rate, field location, and equipment used. Once assigned, operators can perform the job following predefined parameters. With Timapp, you can track who is working, where they are, and whether the task is progressing as planned—ensuring accurate and efficient field operations every time.

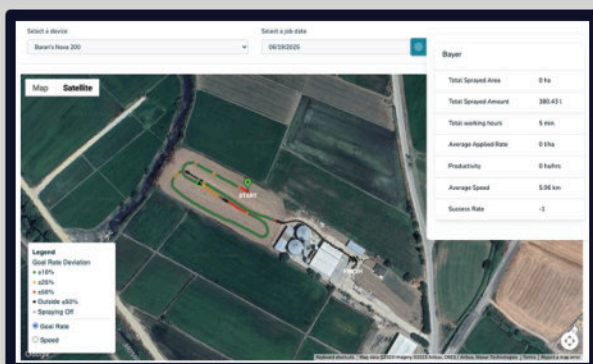
Reports

Gain powerful insights with detailed performance reports. The Reports section provides clear feedback on completed jobs—such as whether spraying was done within the target rate, if the operator maintained proper speed limits, and if field coverage was consistent. This helps identify issues like spray drift caused by excessive speed and ensures that every job meets your quality standards. Timapp turns data into actionable decisions for more precise farming.



Speed report

Displays the tractor's real-time and average working speed, helping operators maintain optimal spraying or application performance. It ensures accurate coverage, efficiency, and consistent field operation quality.



Goal rate report

Shows the target versus actual application rates, helping users verify accuracy, optimize input usage, and maintain consistent spraying performance.

ASSEMBLED KITS TO BE ORDERED



NOVA 100

	TNOV100.01	KYP030	SIM015	SIM016	KYP029	KYP037	KYP028	KYP021	SAL 400504	5W Orion	5W Wolf
K200T1	+	+	+		+		+				
K200T2	+		+		+		+				
K200T3	+		+			+	+				
K200T4	+	+		+	+		+	+			
K200T5	+	+	+			+			+		
K200T1KIT1	+		+		+		+			+	
K200T1KIT2	+		+		+		+				+



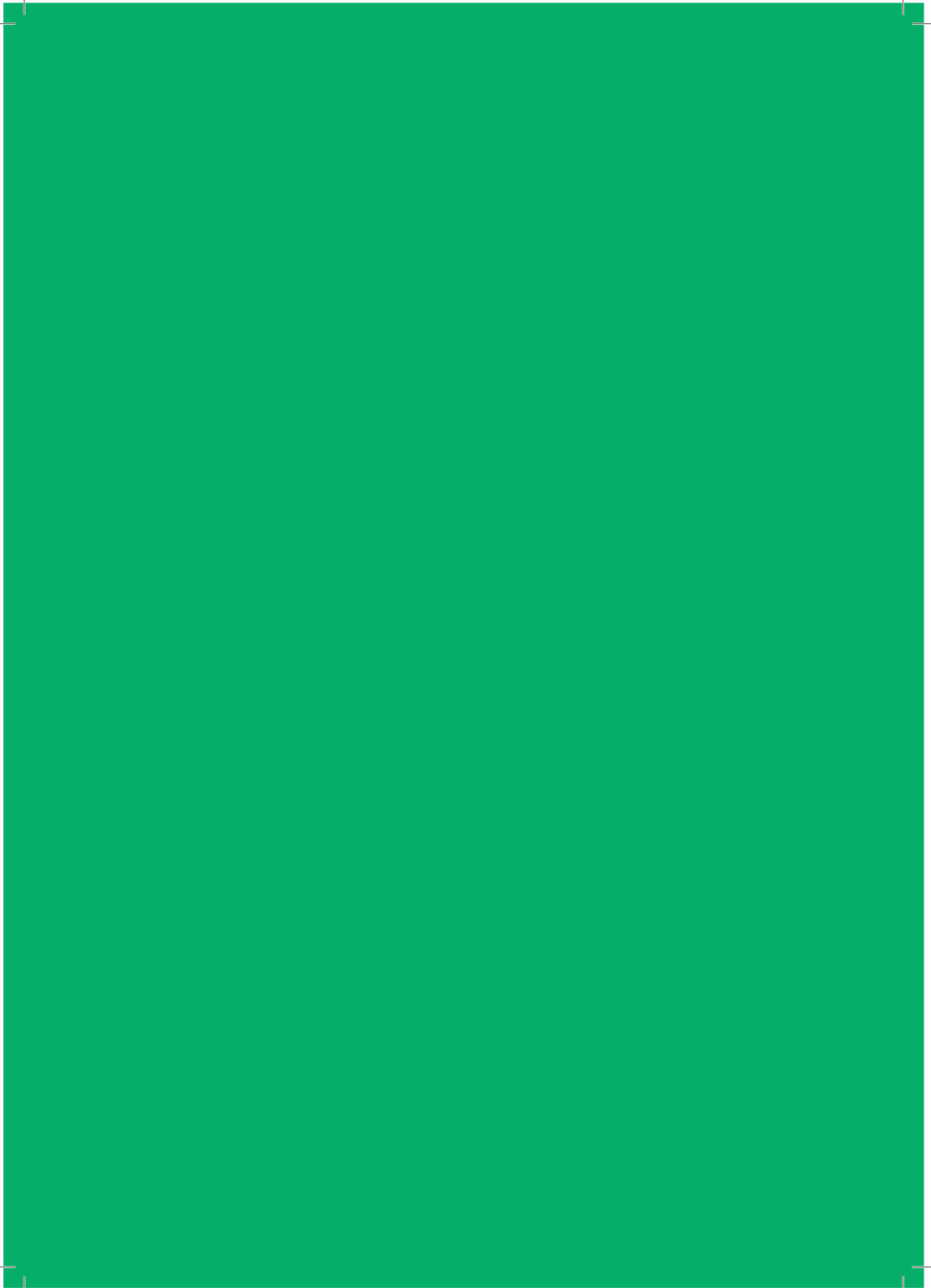
NOVA 110

	TNOV110.01	KYP030	SIM021	KYP029	KYP037	KYP028	KYP021	SAL 400504	2W Orion
K110T2	+	+	+		+			+	



NOVA 200

	TNOV200.01	KYP030	SIM100	SIM101	KYP029	KYP037	KYP033	KYP021	5W Orion	5W Wolf
K500T1	+		+		+		+			
K500T2	+			+	+		+			
K500T3	+		+			+	+			
K500T4	+			+		+	+			
K500T5	+				+					
K500T6	+			+	+			+		
K500T1KIT1	+		+		+		+		+	
K500T1KIT2	+		+		+		+			+





Tim is a registered trademark of **Timsan Tarım İnşaat Makina Sanayi ve Ticaret A.Ş.**
Eseşehir Mah. Haseki Sok. No:20/1, Ümraniye, İstanbul, Türkiye



timdigitize.com