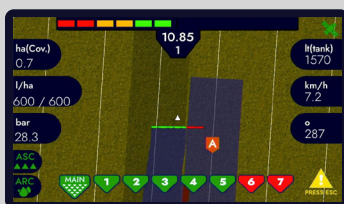




# NOVA 200 AUTO SECTION CONTROL COMPUTER

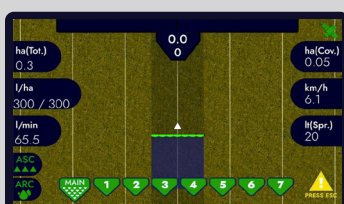
## GENERAL FEATURES



### Auto Section Control (ASC)



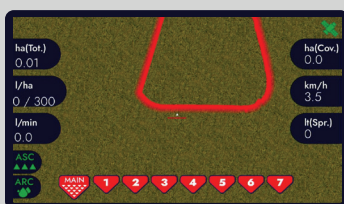
The Automatic Section Control feature automatically turns boom sections on and off based on the field map and GPS position. This prevents overlaps and skips, reduces chemical waste, and ensures precise, efficient spraying even in irregular field shapes.



### Automatic Rate Control (ARC)



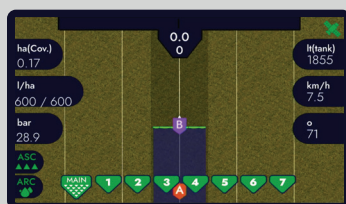
The Automatic Rate Control feature keeps the target application rate constant regardless of changes in speed or field conditions. Nova 200 continuously adjusts flow and pressure in real time, ensuring uniform chemical distribution and optimal spraying efficiency.



### Field Boundary



The Field Boundary feature enables operators to record and define the exact perimeter of a field using GNSS. Nova 200 uses this data to optimize spraying operations – automatically stopping flow outside boundaries and ensuring precise, waste-free application within the defined area.



### A-B Straight Line



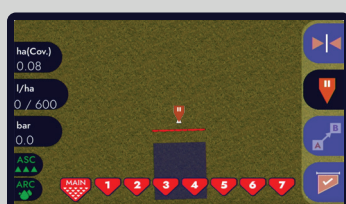
The A-B Straight Line mode allows operators to define a straight guidance path by marking two reference points (A and B). Nova 200 then generates perfectly parallel lines, ensuring precise and consistent navigation across the entire field.



### Shift Line



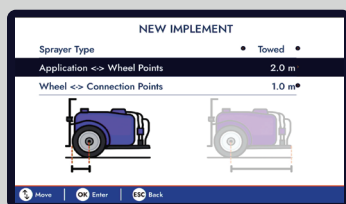
The Shift Line feature allows operators to easily move guidance lines left or right without redefining the A-B line. This provides flexibility during operation, making it simple to adjust for implement width changes, overlaps, or missed passes.



### Pause Point



The Pause Point feature lets operators stop spraying and resume later from the exact GPS location where they left off. Nova 200 automatically records job data during pauses and restarts spraying with precise accuracy, preventing overlaps or missed areas. Ideal for refills, obstacles, or short breaks, it ensures efficient and consistent application across the field.



### Equipment/Tractor Database

The Equipment & Tractor Database feature allows operators to add, configure, and save multiple sprayer and tractor profiles within Nova 200. Each profile stores key parameters such as boom width, number of sections, and calibration data, enabling quick setup, easy switching between machines, and consistent system performance in every operation.



### Auto Save Feature

The Auto Save Feature of Nova 200 continuously records all spraying data in real time, eliminating the need for manual job completion or confirmation. Every action is automatically stored in the controller's memory as it happens, ensuring that no data is lost even if the operator exits the job screen, shuts down the system, or pauses the operation. This intelligent function provides complete traceability, reliability, and operational safety under all field conditions.

## STANDARD PACKAGE

TNOV200.01



Nova 200 Computer



2m Power Cable

## TO BE ORDERED



**SIM100**

Nova 200  
4,5 + 1,5m  
Valve Cable



**KYP036**

Cross 200  
Smart GNSS

## OPTIONAL



**SIM101**

10,5 + 1,5m  
Valve Cable



**KYP029**

Triple Suction  
Cup Mount



**KYP030**

Speed Sensor  
with 2m Cable



**SAL400504**

Kit Blister 3  
Hole Plug  
Tractor Side



**KYP033**

Cross 300 RTK  
Base Station



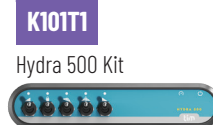
**KYP021**

Level Sensor 0,4 BAR  
with 2m Cable



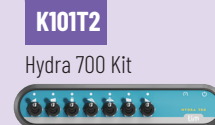
**KYP022**

Pressure Sensor  
25 BAR - G 1/4



**K101T1**

Hydra 500 Kit



**K101T2**

Hydra 700 Kit

## REQUIRED PRODUCTS

### 20 BAR 5W WOLF FLOWMETER ELECTROVALVE KIT



**TA 871T502**



**TA 863T024S**



**TA 32621M3**



**TA 4626415**



**TA 863T0150**

### FITTINGS & MANOMETER



**TA 1091313**



**TA G11058V**



**TA 1190425**



**TA 010004**



**TA 911025**

x5

x1

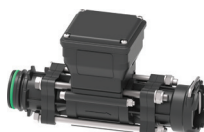
x1

### REQUIRED PRODUCTS - OPTIONALS



**TA 864050250**

200 l/min Main Control Valve



**TA 46211A4A5B5**

ORION Flow Meter



**TA 863T0120**

2W Section Valve



**TA 1091316**

Hose Connector 16 mm

